

72216 End Window-Alpha-Beta-Gamma Detector***GENERAL SPECIFICATIONS***

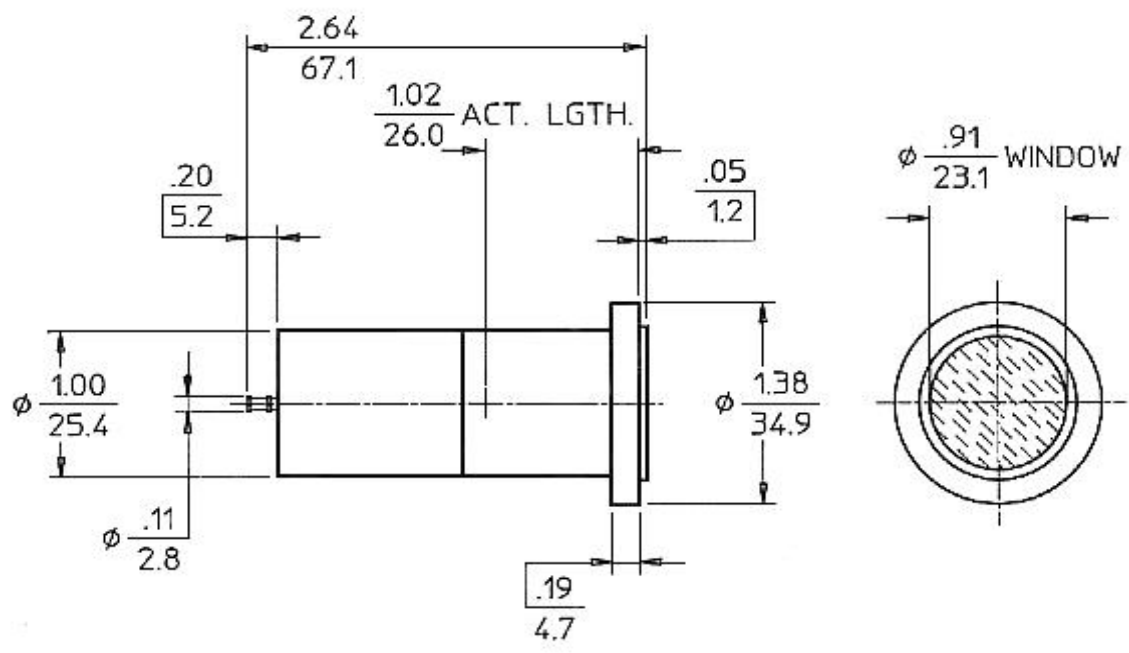
Gas filling	Ne +Halogen
Cathode material	446 Stainless Steel
Maximum length (inch/mm)	2.64/67.1
Effective length (inch/mm)	1.02/26.0
Maximum diameter (inch/mm)	1.38/34.9
Effective diameter (inch/mm)	0.94/24.0
Connector	Pin
Operating temperature range °C	-40 to +75

WINDOW SPECIFICATIONS

Areal density (mg/cm ²)	2.0
Effective diameter (inch/mm)	0.94/24.0
Material	Mica

ELECTRICAL SPECIFICATIONS

Recommended anode resistor (meg ohm)	3.3
Maximum starting voltage (volts)	400
Recommended operating voltage (volts)	500
Operating voltage range (volts)	450 - 700
Maximum plateau slope (%/100 volts)	10
Minimum dead time (micro sec)	70
Gamma sensitivity Co60 (cps/mr/hr)	30
Tube capacitance (pf)	5
Weight (grams)	60
Maximum background shielded 50mm Pb + 3mm Al (cpm)	25
Minimum anode resistor (meg ohm)	2.7



GAMMA SENSITIVITY

TUBE TYPE - 72216

